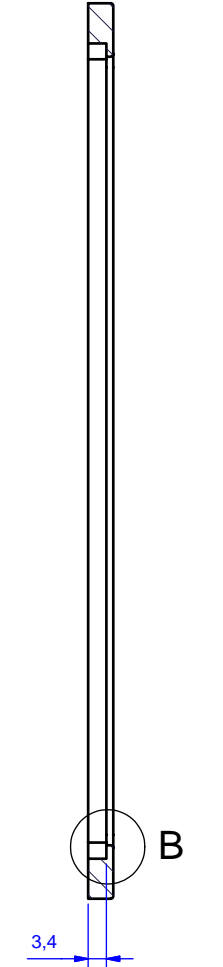
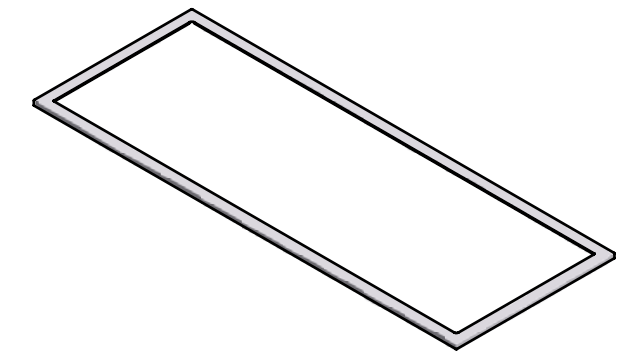
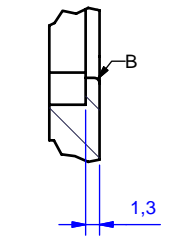


A-A (1 : 1)



B (2 : 1)



- This frame will be used to cover the edges of a keyboard
- Material : Aluminium, brushed
- Visible part : front and edges
- Fillet on edges B : R = 0.5mm
- Upper view; holes are belowside
- Holes : M3 x 3mm ((8x)A)
- Deburr and remove sharp edges

<b>Alu-frame KSTx-series</b>		1240-00	Revision 1
<b>NSi</b>	Designed by R. Hertogen	Date 21/03/2005	Material Aluminium
	Scale: 1 / 1	Format: A2	Sheet: 1 / 1
	Tolerance: ± 0.1mm	Dim. in mm	