

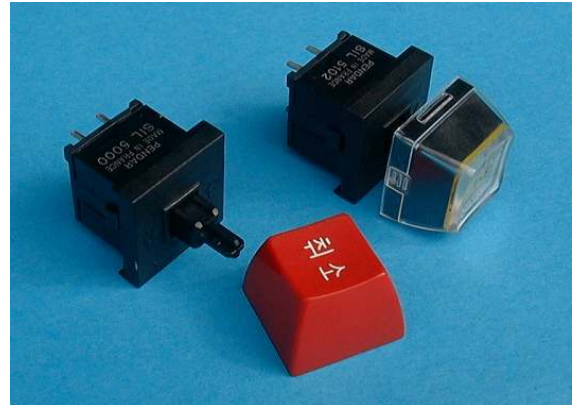
# REED KEYSWITCH SERIES

## • DESCRIPTION

This dry-reed switch assembly contains ferromagnetic contact blades, hermetically sealed in a glass envelope which is filled with an inert gas. The switch is operated by an externally generated magnetic field from a permanent magnet housed in the switch plunger.

## • FEATURES

Long life  
Contacts isolated from the environment  
Superior glass-to-metal seal  
Ambient operating temperature -20°C to +60°C  
Very low and stable contact resistance



## • APPLICATIONS

Dry-reed switches may be used in a wide range of applications, including :

Copy machines  
Data processing equipment  
Measuring and test equipment  
Military applications  
Security systems  
Terminals  
Vending machines  
Audio and video equipment

## • SPECIFICATIONS

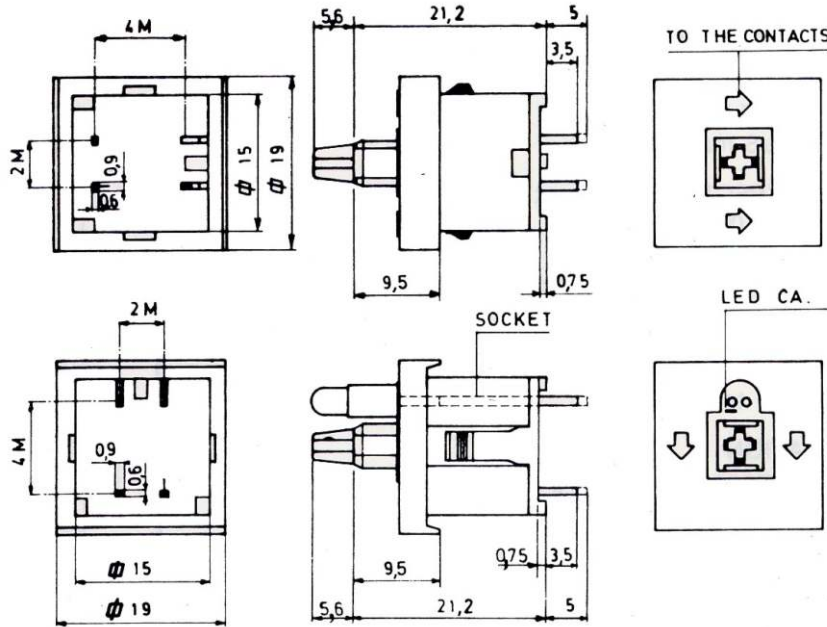
Contact arrangement	1 form A (normally open contact)
Switched power	3 VA resistive maximum
Voltage	100 Vdc maximum
Current	300 mA maximum
Initial contact resistance	< 300 milliohms
Dielectric Standoff (capsule)	200 Vdc / 140 Vrms
Contact bounce	1 mS maximum
Life Expentancy	> 50 million operations
Operating temperature	-20°C to 60°C
Storage temperature	-30°C to 70°C
Vibration	no mechanical damage; non operating test, 10g; 1.5 mm amplitude; 10-2000 Hz.
Shock	no mechanical damage; non operating test, 50g; 11 ms (1/2 sine wave)
Plunger travel	4mm.
Pretravel	0.9 mm
Overtravel	0.5 mm
Release Point	0.5 mm
Operating forces	50 +/- 10 gr. 80 +/- 15 gr.
Material (except plunger)	Self extinguishable class SE0
Connecting pins	New silver, tinned

# REED KEYSWITCHES

## • SFL AND SIL SERIES

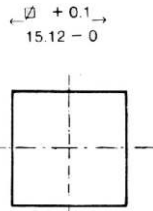
The Low Profile SFL series uses the reliable reed contact technology and is available in momentary, incandescent lighted and LED lighted versions. Their design is such that they can easily be used to form small or large keyboards or pads.

## • DIMENSIONS (in mm. M = 2.54 mm)



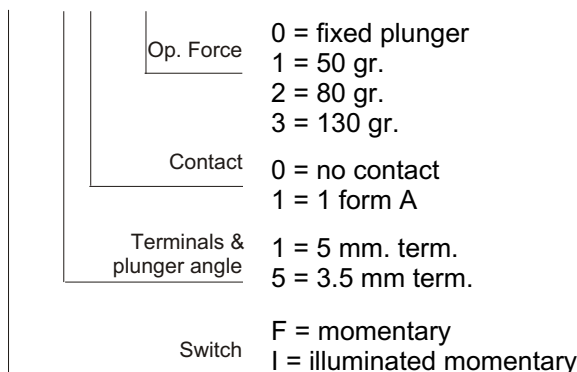
## • PANEL CUT-OUT

Maximum panel thickness : 1,5 mm.



## • SFL SERIES

S x L x O x



Example : SFL5102 is a low profile keyswitch (momentary action), 3.5 mm terminals, 1 form A and 80 gr. operating force.

## • Lamps for SIL Series

T1 bi-pin standard	
5V-75 mA	Ref. 104577-00
12V-60 mA	Ref. 104577-01
18V-26 mA	Ref. 104577-02
28V-24mA	Ref. 104577-03

## • Led T1 type

Red	Ref. 104139-00
Orange	Ref. 104139-01
Yellow	Ref. 104139-02
Green	Ref. 104139-03

## • Adapter for LED Ref 104293-00

• **Keytops** : a large range of keycaps (blank, double shot moulded or illuminated) is available. Contact us for further details.



NSI bvba, Haakstraat 1A, B-3740 Bilzen, Belgium  
 Tel. : ++32 (0) 89 51 90 00 Website : www.nsi-be.com  
 Fax : ++32 (0) 89 51 90 09 E-mail : info@nsi-be.com